

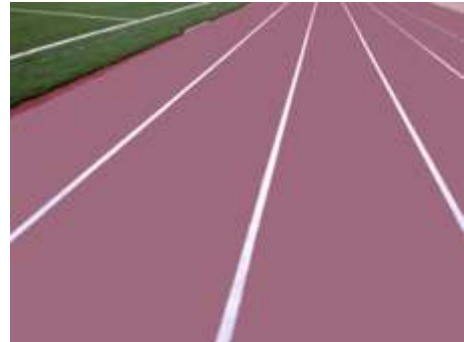
JOGGING TRACKS

POLTRACK PU JOGGING TRACK

Elastic, seamless, flexible colored flooring, ideal for jogging tracks in total thickness of 18mm.

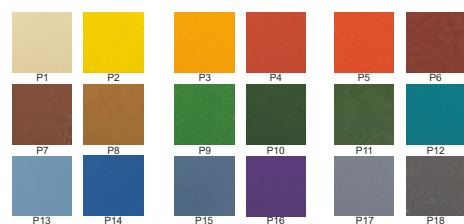
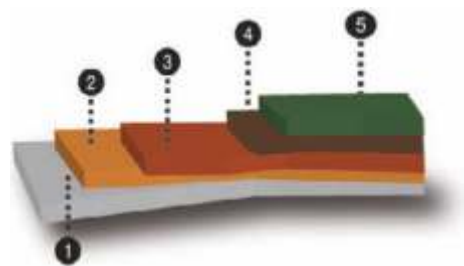
It consists of a shock-pad base of **PU BINDER 1118** with **RECYCLED RUBBER 858**. Follows the PU, flexible pore filler coating **POLYSPORT STUCCO 1050**, and then the PU self-leveling coating, **POLYSPORT PU 1051**. Finally a sealing PU, UV-resistant aliphatic top layer, **POLYSPORT 1056**, is applied in two crossing layers.

The success in the application depends on the right preparation of the underlay and use of the material.



Steps:

1. **PU PRIMER 870 - Special, polyurethane primer.**
Applied by airless sprayer or brush on asphalt surfaces or on waterproof concrete surfaces without rising humidity issues.
2. **Mixture of PU BINDER 1118 and RECYCLED RUBBER 858 - Elastic, shock-absorbent, wet-pour system.**
The **RECYCLED RUBBER 858** is in granulometry of 0.5-2mm. The mixture is applied by paving machine in thickness of 16mm.
3. **POLYSPORT STUCCO 1050 - Polyurethane, elastic, two-component pore filler.**
Used for sealing porous wet-pour shock-pad sub-floors of sports floorings systems. Applied by flat trowel.
4. **POLYSPORT PU 1051 - Polyurethane, self-leveling, two-component coat for outdoor sports surfaces.**
It is combined with wet-pour, shock-absorbent, resilient rubber cushion as substrate to create multipurpose sports flooring systems. Pore filling with **POLYSPORT STUCCO 1050** precedes its application. Applied by V-notch trowel and the parallel use of spiked roller.
5. **POLYSPORT 1056 - UV-resistant, polyurethane, aliphatic, two-component top coating for outdoor sports flooring.**
Applied, in two crossing layers by airless sprayer or short haired mohair roller.



| Description | Consumption |
|--|---|
| PU PRIMER 870 - Special, polyurethane primer. | 0.2-0.3kg/m ² for 2 layers |
| PU BINDER 1118 - Polyurethane binder. | 1.92kg/m ² for 16mm mixture |
| RECYCLED RUBBER 858 - SBR granules in granulometry of 0.5-2mm. | 9.6kg/m ² for 16mm mixture |
| POLYSPORT STUCCO 1050 - Polyurethane, elastic, two-component pore filler. | 1.3-1.5kg/m ² for 2 layers |
| POLYSPORT PU 1051 - Polyurethane, self-leveling, two-component coat for outdoor sports surfaces. | 2-2.2kg/m ² for 1 layer |
| POLYSPORT 1056 - UV-resistant, polyurethane, two-component, top coating for outdoor sports flooring. | 0.3kg/m ² for 2 layers |